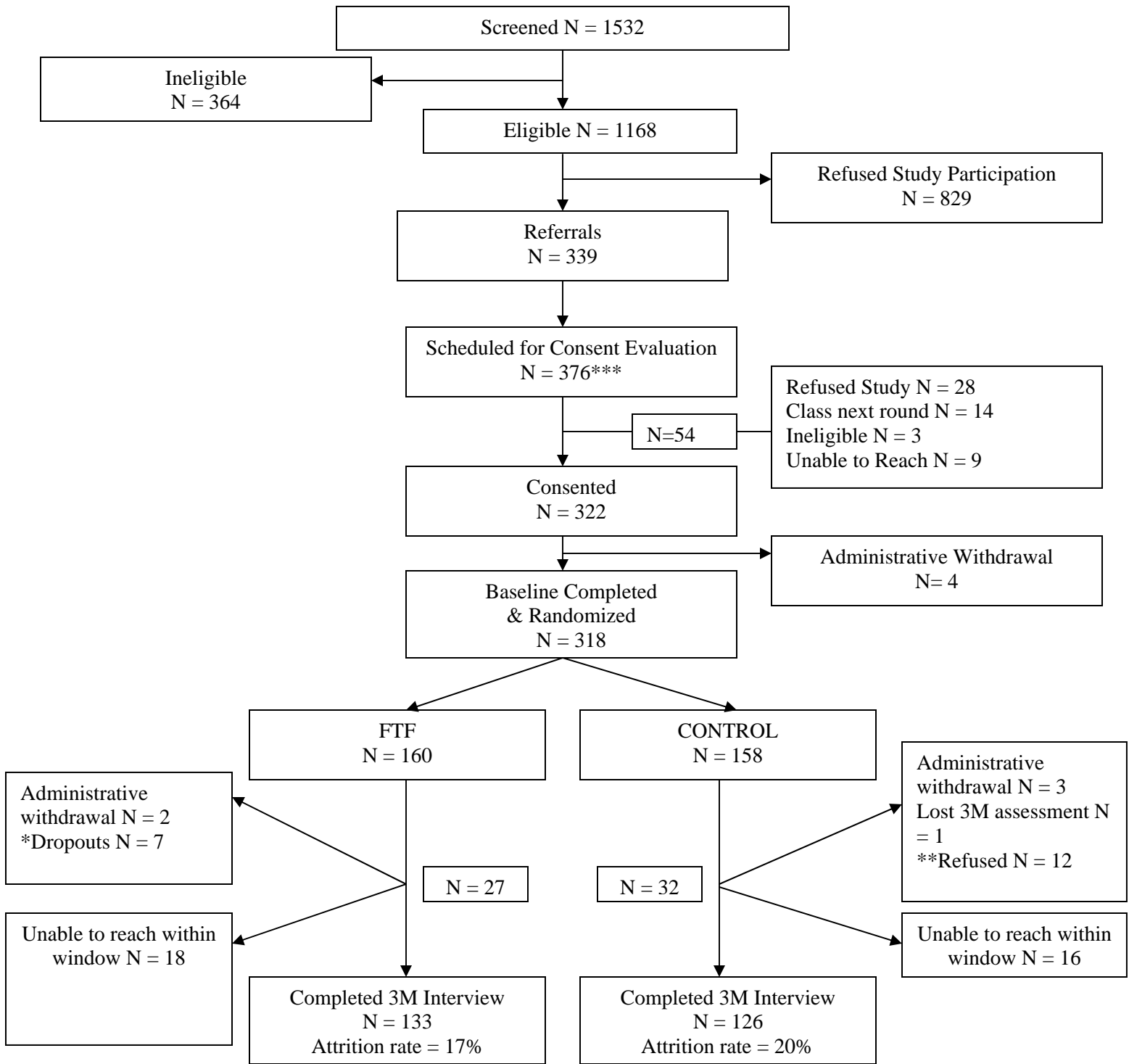


FTF Family Member Flow Chart



*Participant ended his/her participation in the study
 ** Participant refused to complete the follow up interview
 *** 37 family members referred to the study a second member of their family who was also planning to take the FTF class and agreed to consider being part of the study. With respect to family member “doubles,” there were 10 pre-existing doubles in the N=339, and then 37 more were referred; the N=376 group thus included 47 “doubles.” Four people from the “double”family were dropped because they never consented. In the N=318 Baseline completed and randomized sample, there were 43 doubles. One person in control group from the double family was administratively withdrawn, so the final sample had 42 doubles; the completers only sample included 32 within family pairs.