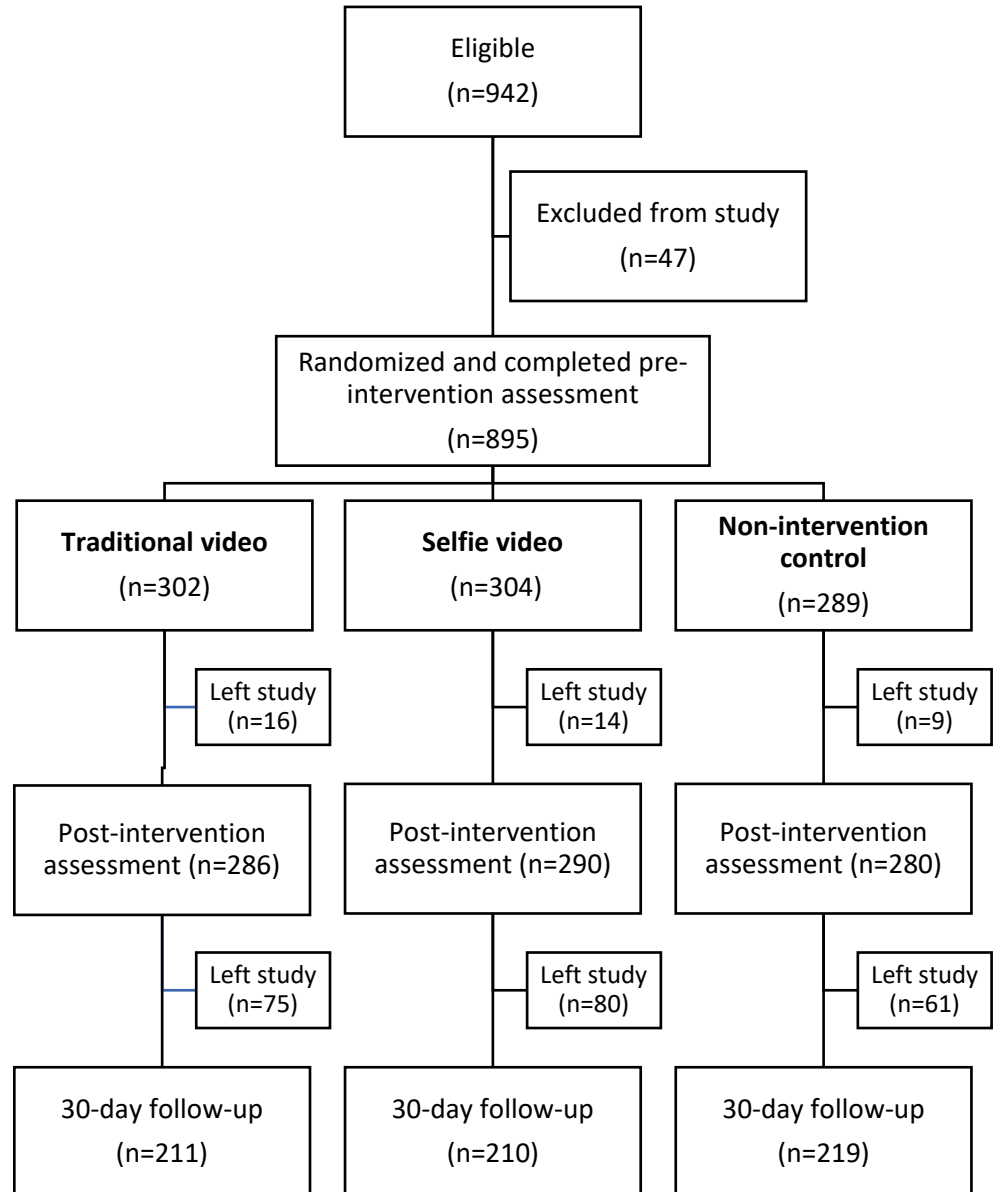
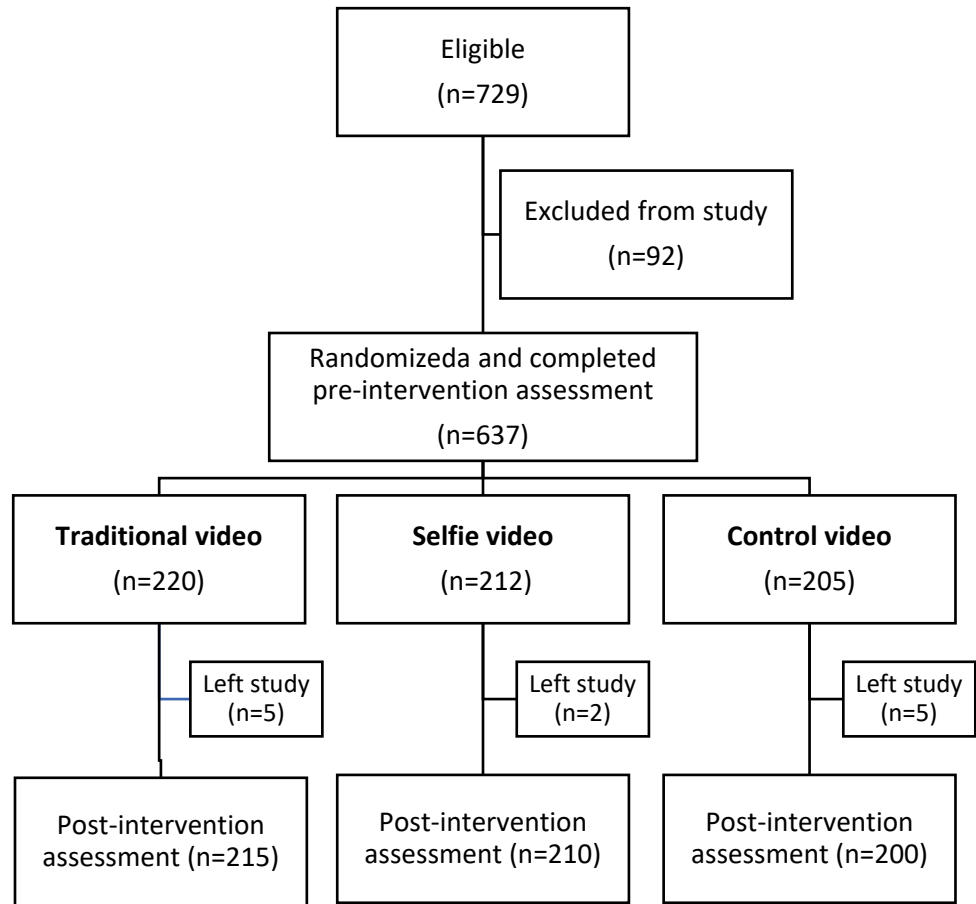


1. Study profile: young adults



2. Study profile: adolescents



Psychosis related questionnaires

Social Distance

Would you be willing to...

- 1 ...have someone with schizophrenia as a neighbor?
- 2 ...be close friends with someone with schizophrenia?
- 3 ...have a person with schizophrenia working closely with you on a job?
- 4 ...allow a child of yours to date a person with schizophrenia?
- 5 ...allow a child of yours to marry a person with schizophrenia?
- 6 ...allow a child of yours to have a baby with a person with schizophrenia?

Stereotyping

How able is a person with schizophrenia to...

- 7 ...make his own decisions about the treatment he should receive?
- 8 ...make his/her own decisions about managing his own money?

How likely is it that a person with schizophrenia would...

- 9 ...do something violent towards other people?
- 10 ...do something violent towards himself?

Separateness

- 11 When you think of a person with schizophrenia, how different do you think he is from other people?
- 12 Although a person with schizophrenia may seem just like everyone else, he is actually different in important ways
- 13 Someone with arthritis has just one thing wrong with them, but a person with schizophrenia is very different from other people
- 14 Although he may be like other people in many ways, a person with schizophrenia is fundamentally different from other people

Social Restriction

A person with schizophrenia...

- 15 ...could be trusted to babysit small children
- 16 ...shouldn't get married- that is, he should stay single
- 17 ...shouldn't have children of his own- that is, he should remain childless

Recovery Assessment Scale

I believe that a person with schizophrenia...

- 18 ...has a plan for how to stay well
 - 19 ...can meet his current personal goals
-