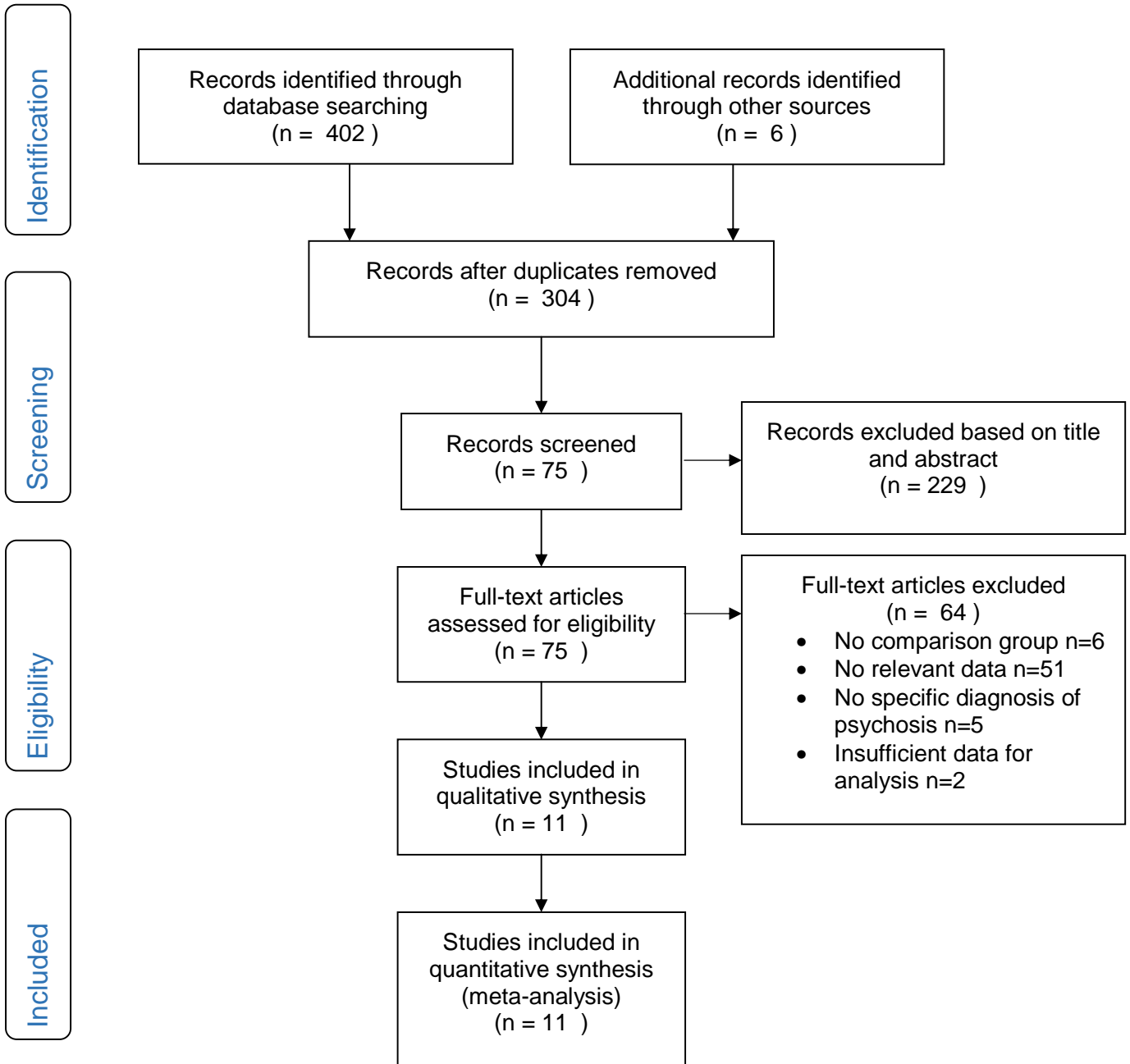


### Literature Search Flow Diagram



**Table of studies included in systematic review and meta-analysis**

Source	Time period studied	Country	Data source	Study population	Control population	Covariates for adjusted odds ratio	Quality
Carney and Jones, 2018	1996-2001	United States	Claims data	525	131683	age, nonmental health care visits to PCPs and ob/gyns, months of eligibility, urban/rural, substance use dx	High
Chochinov et al., 2009	2002-2004	Canada	Claims data	1448	108792	age, income, geographic province, primary care services, co-morbidity	High
Dickerson et al., 2002	1999-2000	United States	Survey	42	480	age, race/ethnicity, marital status, education, income, insurance source	High
Domino et al., 2014	2008-2010	United States	Claims data linked to mental health records	15636	5924	age, receipt of ACT/psychotherapy	Medium
Jensen et al., 2016	2008-2009	Denmark	National registry	1022	96616	socioeconomic status, race/ethnicity, marital status, education	High
Lasser et al., 2003 <sup>a</sup>	1998-2003	United States	Survey linked to medical records	12	293		High
Lindamer et al., 2003	1996-2001	United States	Survey linked to medical records	65	51	age, education, race/ethnicity, marital status, ob/gyn health history	Low
Salsberry et al., 2005 <sup>b</sup>	1996-1998	United States	Claims data	60	16220	age, race/ethnicity, chronic medical conditions	Medium
Thomas et al., 2018 <sup>b</sup>	2010-2011	United States	Claims data	6335	16836	race/ethnicity, urban/rural, diagnosis, substance use, nonpsychiatric health care use	Medium
Werneke et al., 2006	1996-1998	England	Linkage with national registry	55	44195	age, race/ethnicity, geographic region, socioeconomic status, severity of psychiatric illness	High
Woodhead et al., 2016 <sup>a</sup>	2013	England	Linkage with national registry	247	25385	age, race/ethnicity, deprivation, medical consultations	High

<sup>a</sup>These authors were contacted for discrepancies in their calculations; corrected values are presented here.

<sup>b</sup>These studies reference data from the National Health Interview Survey (NHIS). Control population numbers were drawn from the 1997 (Salsberry) and 2010 (Thomas) NHIS reports.