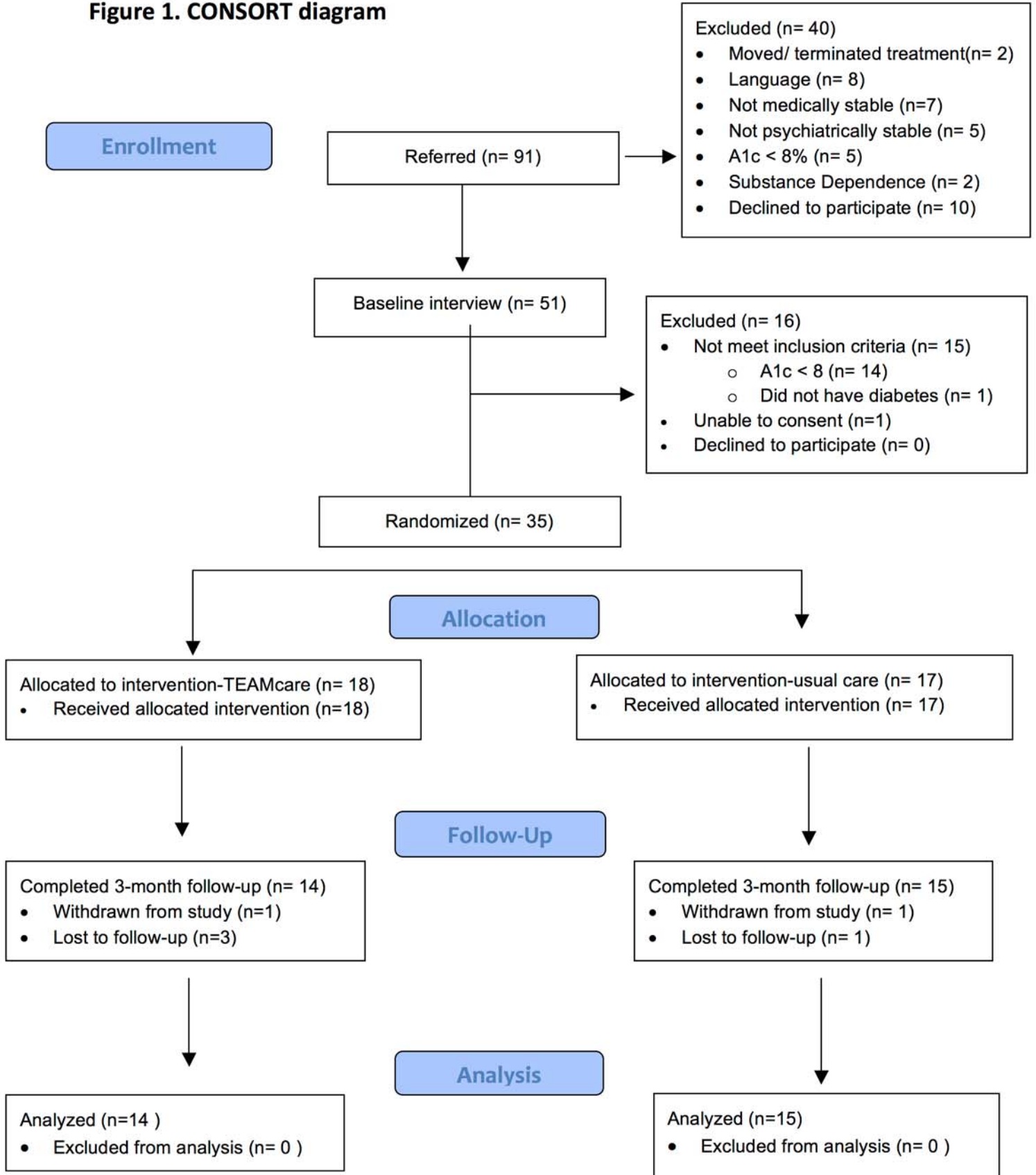


**Figure 1. CONSORT diagram**



**Table 1. Collaborative Care Core Components and Adaptations for CMHC setting based on Stakeholder Input**

Core Components of Collaborative Care <sup>22</sup>	Adapted Elements
Person-centered care	<ul style="list-style-type: none"> <li>• Care delivered at CMHC</li> <li>• Patient educational materials adapted for target population (self-management of psychotic symptoms as well as depression, effects of antipsychotic medications)</li> <li>• Care coordination with both primary care and CMHC providers</li> </ul>
Multidisciplinary team	<ul style="list-style-type: none"> <li>• CMHC nurses as care managers</li> <li>• CMHC Psychiatrist as team psychiatrist</li> <li>• Endocrinologist consultant</li> </ul>
Population-based care	<ul style="list-style-type: none"> <li>• Caseload tracked in a registry (ACCESS spreadsheet), maintained by CMHC nurse care manager</li> </ul>
Measurement-based care	<ul style="list-style-type: none"> <li>• Weekly caseload review by team during team meetings held at CMHC</li> <li>• Treat-to-Target outcomes: A1c, Systolic Blood Pressure, PHQ9 (among those with current depression)</li> </ul>
Evidence-based care	<ul style="list-style-type: none"> <li>• Motivational interviewing to target health behavior change</li> <li>• Behavioral activation to target depression and negative symptoms of schizophrenia</li> <li>• Increased emphasis on tobacco, alcohol and substance use;</li> </ul>

	<b>Intervention (n= 18)</b>		<b>Usual care (n= 17)</b>		<b>p</b>
	<b>N</b>	<b>%</b>	<b>N</b>	<b>%</b>	
<b>Demographics</b>					
Gender, male	11	61.1	12	70.6	.72
Race, non-white	10	55.6	11	64.7	.73
Educational level, HS / GED or less	12	66.6	13	81.3	.38
Marital status, married	1	5.6	1	5.9	.54
<b>Clinical Characteristics</b>					
Primary psychiatric diagnosis of schizophrenia or schizoaffective disorder	8	44.4	8	47.1	.40
On second generation antipsychotic medication	7	38.9	12	70.6	.09
On clozapine or olanzapine	2	11.1	0	0	.49
History of alcohol use disorder	3	17.6	2	11.7	.34
History of cocaine use disorder	2	11.7	2	11.7	
History of opioid use disorder	1	5.9	0	0	
Current smoker	10	55.6	9	52.9	1.00
Hypertension	14	76.4	13	76.4	.93
Cardiovascular Disease	4	23.5	3	17.6	.74
Congestive Heart Failure	4	23.5	2	11.7	.41
Diabetes complications	12	66.6	6	35.3	.24
On Insulin	10	55.6	10	58.8	1.00
On antihypertensive medication	14	76.4	13	76.4	.93
On statin	10	55.6	9	52.9	1.00
	<b>Mean ± SD</b>		<b>Mean ± SD</b>		<b>p</b>
Age, Years	51.5 ± 10.3		51.0 ± 9.1		.88
Fagerstrom nicotine dependence scale	5.7 ± 2.5		6.1 ± 1.2		.67
PHQ-9	12.9 ± 7.4		10.4 ± 6.8		.29
BPRS	20.6 ± 10.6		15.1 ± 5.2		.07
Hemoglobin A1c, %	9.4 ± (2.2)		8.3 ± (1.9)		.13
Systolic Blood pressure, mm Hg	135.8 ± 16.4		134.1 ± (16.8)		.77
LDL, ml/ dl	110.6 ± (74.5)		77.1 ± (53.8)		.14
Triglycerides	257.4 ± (146.2)		244.6 ± (179.7)		.82
BMI	37.5 ± (10.2)		35.2 ± (7.0)		.44