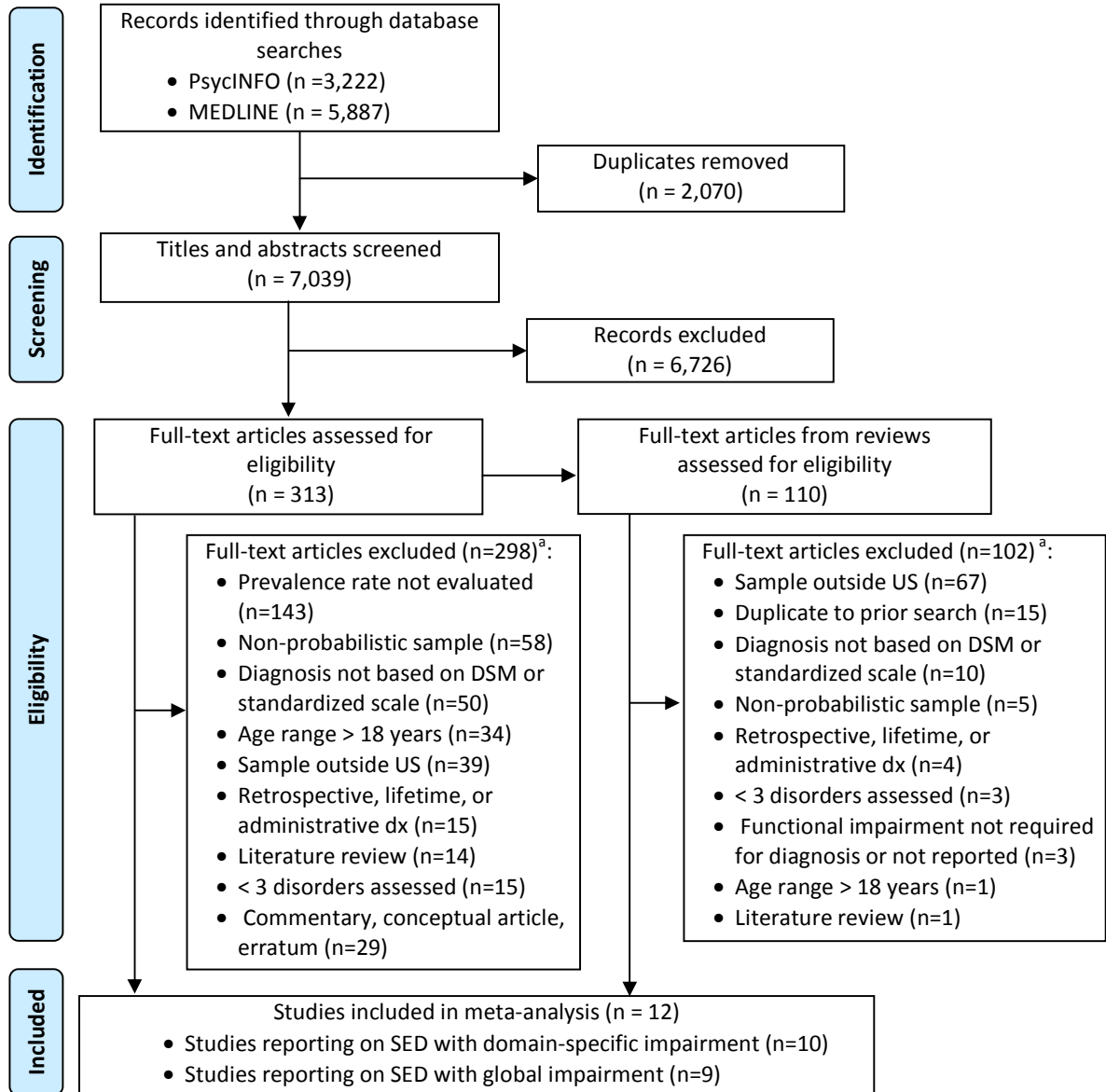


Supplemental Figure 1. PRISMA Flow Diagram of Study Identification, Screening, and Selection



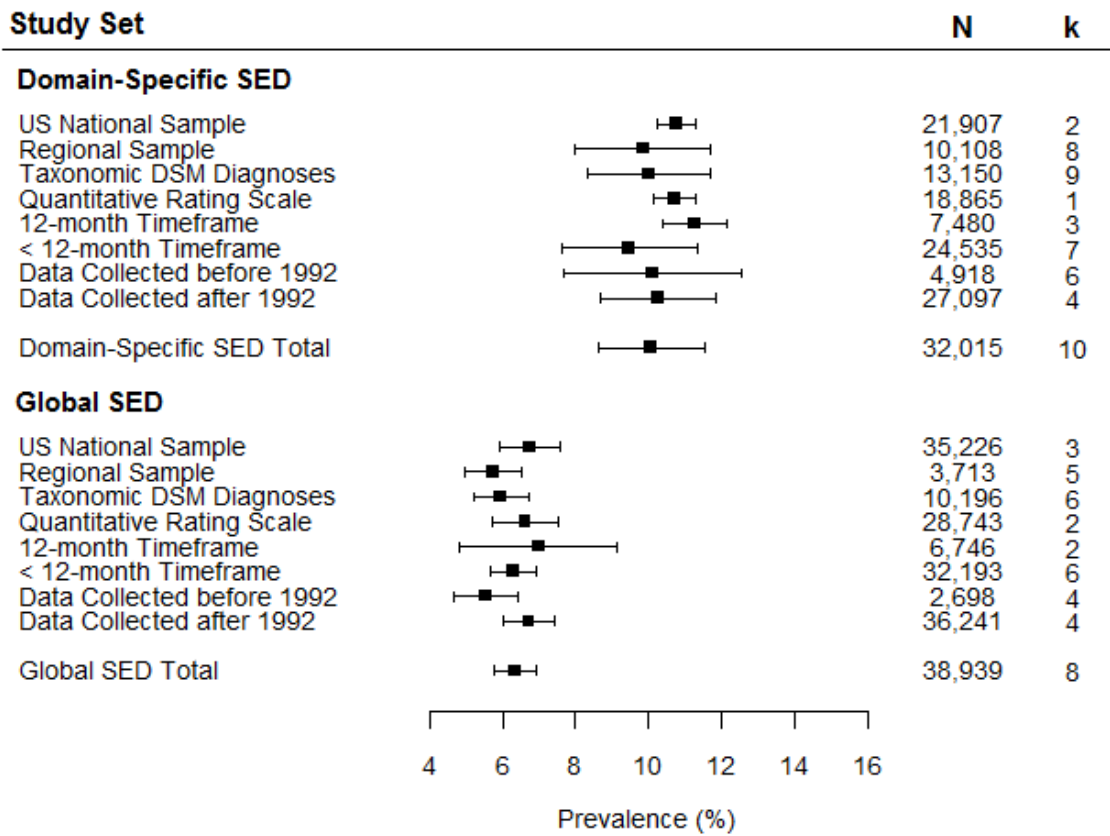
^a Category *n*'s do not sum to total *N* because articles could be excluded for multiple reasons.

Supplemental Table 1. Meta-Analyses of Serious Emotional Disturbance (SED) Prevalence by Study Type and Level of Impairment

Study Type	Domain-Specific SED				Global SED			
	Prevalence (%)	95% <i>CI</i>	<i>k</i>	<i>N</i>	Prevalence (%)	95% <i>CI</i>	<i>k</i>	<i>N</i>
US National Sample	10.75	10.22 – 11.29	2	21,907	6.75	5.91 – 7.58	3	35,226
Regional Sample	9.84	7.98 – 11.70	8	10,108	5.76	4.98 – 6.55	5	3,713
Taxonomic DSM Diagnoses	10.00	8.33 – 11.65	9	13,150	5.96	5.21 – 6.71	6	10,196
Quantitative Rating Scale	10.70	10.14 – 11.26	1	18,865	6.62	5.74 – 7.51	2	28,743
12-month Timeframe	11.26	10.38 – 12.15	3	7,480	6.99	4.84 – 9.14	2	6,746
< 12-month Timeframe	9.46	7.60 – 11.31	7	24,535	6.29	5.67 – 6.91	6	32,193
Data Collected before 1992	10.09	7.66 – 12.52	6	4,918	5.55	4.68 – 6.41	4	2,698
Data Collected after 1992	10.26	8.68 – 11.74	4	27,097	6.73	6.03 – 7.43	4	36,241
Total	10.06	8.60 – 11.51	10	32,015	6.36	5.78 – 6.93	8	38,939

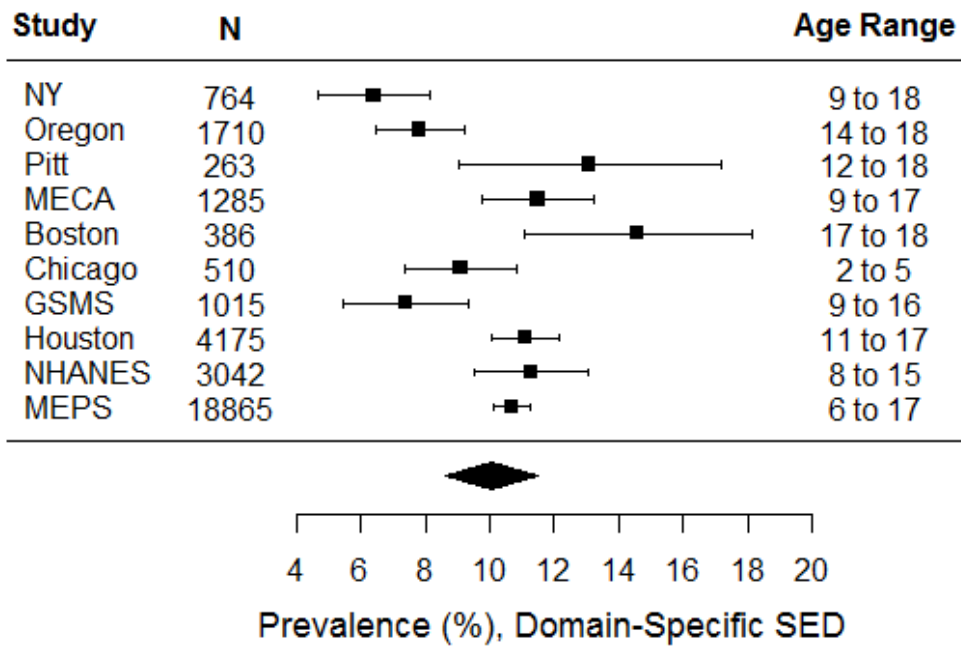
Note: *k* = number of studies included in the meta-analysis, *N* = number of youth included in the meta-analysis.

Supplemental Figure 2. Meta-Analytic Prevalence Estimates of Serious Emotional Disturbance (SED) by Study Type and Level of Impairment.



Note: *N* = number of youth included in meta-analytic estimate; *k* = number of studies included in meta-analytic estimate.

Supplemental Figure 3. Domain-Specific SED Prevalence Estimates Ordered by Year of Data Collection.



Supplemental Figure 4. Global SED Prevalence Estimates Ordered by Year of Data Collection.

