

Supplementary Table 1

STROBE Statement for reports of cohort studies

| | Item No | Recommendation | Page |
|------------------------------|--------------------|--|---|
| Title and abstract | 1 | (a) Indicate the study's design with a commonly used term in the title or the abstract | 2 |
| | | (b) Provide in the abstract an informative and balanced summary of what was done and what was found | 2 |
| Introduction | | | |
| Background/ rationale | 2 | Explain the scientific background and rationale for the investigation being reported | 3-5 |
| Objectives | 3 | State specific objectives, including any prespecified hypotheses | 4-5 |
| Methods | | | |
| Study design | 4 | Present key elements of study design early in the paper | 5 |
| Setting | 5 | Describe the setting, locations, and relevant dates, including periods of recruitment, exposure, follow-up, and data collection | 5-6 |
| Participants | 6 | (a) Give the eligibility criteria, and the sources and methods of selection of participants. Describe methods of follow-up | 5-6, Supplementary Figure 1 and 3 |
| | | (b) For matched studies, give matching criteria and number of exposed and unexposed | N/A |
| Variables | 7 | Clearly define all outcomes, exposures, predictors, potential confounders, and effect modifiers. Give diagnostic criteria, if applicable | 6-7 |
| Data sources/ measurement | 8* | For each variable of interest, give sources of data and details of methods of assessment (measurement). Describe comparability of assessment methods if there is more than one group | 6-7 |

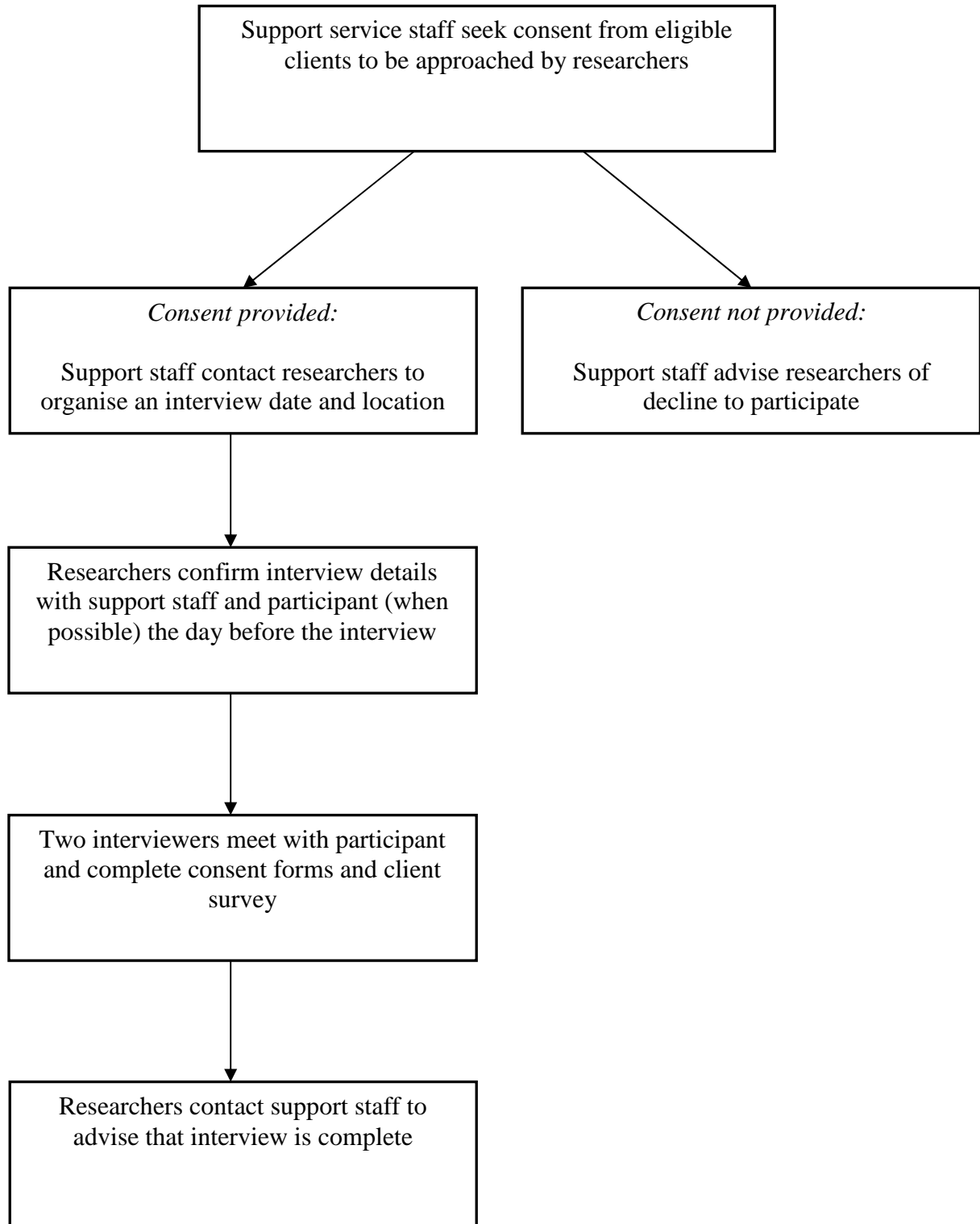
| | | | |
|------------------------|-----|---|------------------------------------|
| Bias | 9 | Describe any efforts to address potential sources of bias | 7-8 |
| Study size | 10 | Explain how the study size was arrived at | 5, 12 |
| Quantitative variables | 11 | Explain how quantitative variables were handled in the analyses. If applicable, describe which groupings were chosen and why | 7-8 |
| Statistical methods | 12 | (a) Describe all statistical methods, including those used to control for confounding | 7-8 |
| | | (b) Describe any methods used to examine subgroups and interactions | N/A |
| | | (c) Explain how missing data were addressed | 7-8 |
| | | (d) If applicable, explain how loss to follow-up was addressed | 7-8 |
| | | (e) Describe any sensitivity analyses | N/A |
| Results | | | |
| Participants | 13* | (a) Report numbers of individuals at each stage of study—eg numbers potentially eligible, examined for eligibility, confirmed eligible, included in the study, completing follow-up, and analysed | Supplementary Figure 2 |
| | | (b) Give reasons for non-participation at each stage | Supplementary Figure 2 |
| | | (c) Consider use of a flow diagram | Supplementary Figure 2 |
| Descriptive data | 14* | (a) Give characteristics of study participants (eg demographic, clinical, social) and information on exposures and potential confounders | 8 |
| | | (b) Indicate number of participants with missing data for each variable of interest | 8, Supplementary Tables 2 and 3 |
| | | (c) Summarise follow-up time (eg, average and | 6 |

total amount)

| | | | |
|--------------------------|-----|--|---|
| Outcome data | 15* | Report numbers of outcome events or summary measures over time | 8-9 |
| Main results | 16 | (a) Give unadjusted estimates and, if applicable, confounder-adjusted estimates and their precision (eg, 95% confidence interval). Make clear which confounders were adjusted for and why they were included | 8-9, Tables 1-2, Supplementary Tables 2 and 3 |
| | | (b) Report category boundaries when continuous variables were categorized | Tables 1-2, Supplementary Tables 2 and 3 |
| | | (c) If relevant, consider translating estimates of relative risk into absolute risk for a meaningful time period | N/A |
| Other analyses | 17 | Report other analyses done—eg analyses of subgroups and interactions, and sensitivity analyses | N/A |
| Discussion | | | |
| Key results | 18 | Summarise key results with reference to study objectives | 10-13 |
| Limitations | 19 | Discuss limitations of the study, taking into account sources of potential bias or imprecision. Discuss both direction and magnitude of any potential bias | 12 |
| Interpretation | 20 | Give a cautious overall interpretation of results considering objectives, limitations, multiplicity of analyses, results from similar studies, and other relevant evidence | 10-13 |
| Generalisability | 21 | Discuss the generalisability (external validity) of the study results | 12-13 |
| Other information | | | |
| Funding | 22 | Give the source of funding and the role of the funders for the present study and, if applicable, for the original study on which the present article is based | 8 |

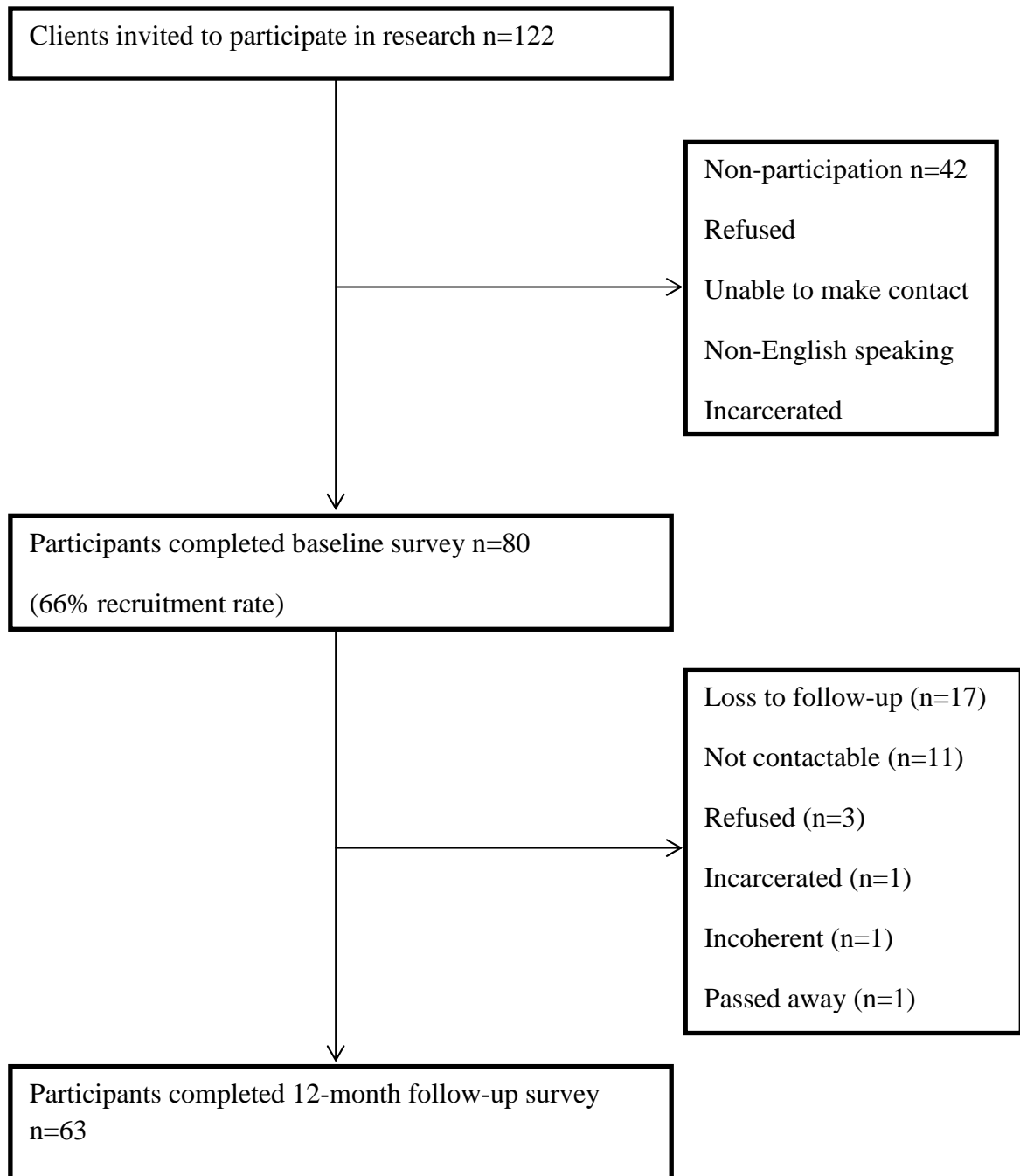
Supplementary Figure 1

Flowchart of recruitment process for client survey participants



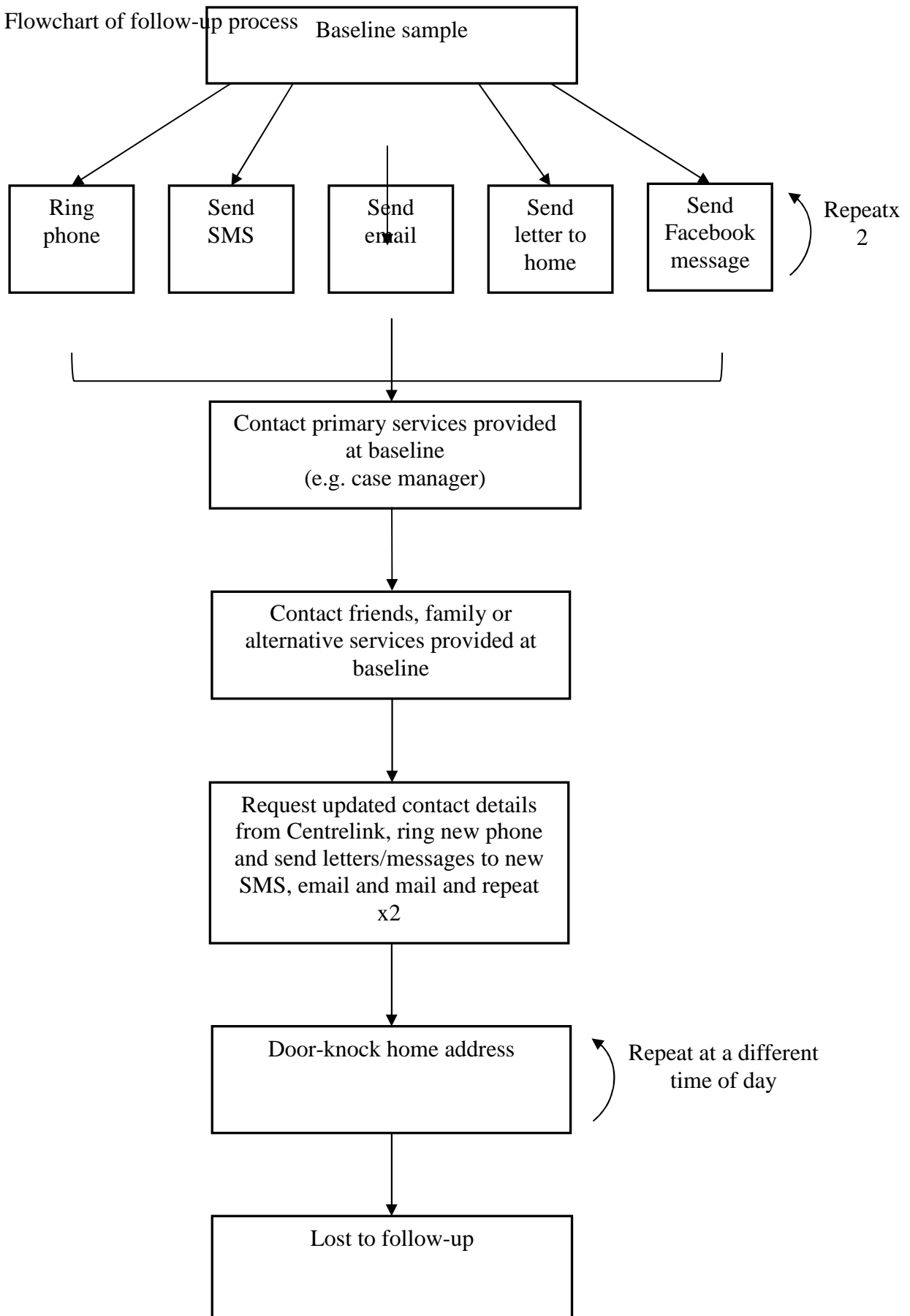
Supplementary Figure 2

Flowchart of baseline recruitment and 12-month follow-up



Supplementary Figure 3

Flowchart of follow-up process



Supplementary Table 2

Self-reported contact with criminal justice system channels in the previous 12 months by housing configuration group (SS vs CS) (n=59)

| Outcome | Baseline | | Follow-up | | Change | 95% CI | Adjusted odds ratio ^a | 95% CI |
|--------------------|----------|----|-----------|----|--------|-----------|----------------------------------|--------------|
| | N | % | N | % | | | | |
| Stopped on street | | | | | | | 1.0 | 1.0 to 1.0 |
| SS | 37 | 68 | 37 | 65 | -3 | -21 to 16 | | |
| CS | 21 | 48 | 21 | 62 | 14 | -7 to 36 | | |
| Held overnight | | | | | | | 5.8 | .8 to 41.0 |
| SS | 37 | 14 | 37 | 5 | -9 | -17 to 1 | | |
| CS | 22 | 14 | 22 | 23 | 9 | -14 to 32 | | |
| Attended court | | | | | | | 19.8* | 1.9 to 204.2 |
| SS | 37 | 32 | 37 | 14 | -18 | -34 to -4 | | |
| CS | 22 | 27 | 22 | 41 | 14 | -2 to 29 | | |
| Adult prison | | | | | | | | # |
| SS | 37 | 5 | 37 | 3 | -2 | -12 to 7 | | |
| CS | 22 | 0 | 22 | 5 | 5 | -5 to 14 | | |
| Parole supervision | | | | | | | | # |
| SS | 37 | 16 | 37 | 3 | -13 | -25 to -2 | | |
| CS | 22 | 5 | 22 | 5 | 0 | -5 to 5 | | |

* $p < .05$.

^a Adjusted for baseline housing duration and baseline score.

[#] Not estimated due to low number of events

SS, scatter site; CS, congregated site; n, number; CI, Confidence Interval.

Supplementary Table 3

Self-reported social connections according to housing configuration group (n=58)

| Outcome | Baseline | | Follow-up | | Change | 95% CI | Adjusted odds ratio ^a | 95% CI |
|-------------------------|----------|-----|-----------|----|--------|-----------|----------------------------------|-------------|
| | N | % | N | % | | | | |
| Case manager | | | | | | | 10.9* | 1.2 to 96.1 |
| SS | 34 | 88 | 34 | 68 | -20 | -41 to 0 | | |
| CS | 24 | 100 | 24 | 96 | -4 | -13 to 4 | | |
| Regular family contact | | | | | | | .3 | .0 to 1.4 |
| SS | 29 | 41 | 29 | 45 | 4 | -15 to 22 | | |
| CS | 18 | 33 | 18 | 22 | -11 | -35 to 12 | | |
| Regular social contact | | | | | | | .1 | .0 to 1.2 |
| SS | 29 | 97 | 29 | 97 | 0 | -10 to 10 | | |
| CS | 18 | 78 | 18 | 78 | 0 | -24 to 24 | | |
| Problems with friends | | | | | | | 2.3 | .5 to 9.5 |
| SS | 27 | 22 | 27 | 33 | 11 | -6 to 28 | | |
| CS | 17 | 41 | 17 | 53 | 12 | -24 to 48 | | |
| Mixing with bad company | | | | | | | .4 | .1 to 2.1 |
| SS | 27 | 41 | 27 | 33 | -8 | -36 to 21 | | |
| CS | 18 | 44 | 18 | 17 | -28 | -56 to 0 | | |
| Boredom | | | | | | | 1.4 | .2 to 10.6 |
| SS | 27 | 56 | 27 | 70 | 14 | 0 to 29 | | |
| CS | 18 | 56 | 18 | 67 | 11 | -12 to 35 | | |
| Loneliness | | | | | | | .8 | .1 to 4.1 |
| SS | 27 | 48 | 27 | 56 | 8 | -11 to 26 | | |
| CS | 18 | 61 | 18 | 50 | -11 | -35 to 12 | | |
| Losing temper | | | | | | | .6 | .1 to 2.5 |
| SS | 27 | 48 | 27 | 41 | -7 | -29 to 14 | | |
| CS | 18 | 61 | 18 | 33 | -28 | -51 to -5 | | |

* $p < .05$.^a Adjusted for baseline housing duration and baseline score.

SS, scatter site; CS, congregated site; QOL, Quality of Life; n, number; M, Mean; SD, Standard Deviation; CI, Confidence Interval.