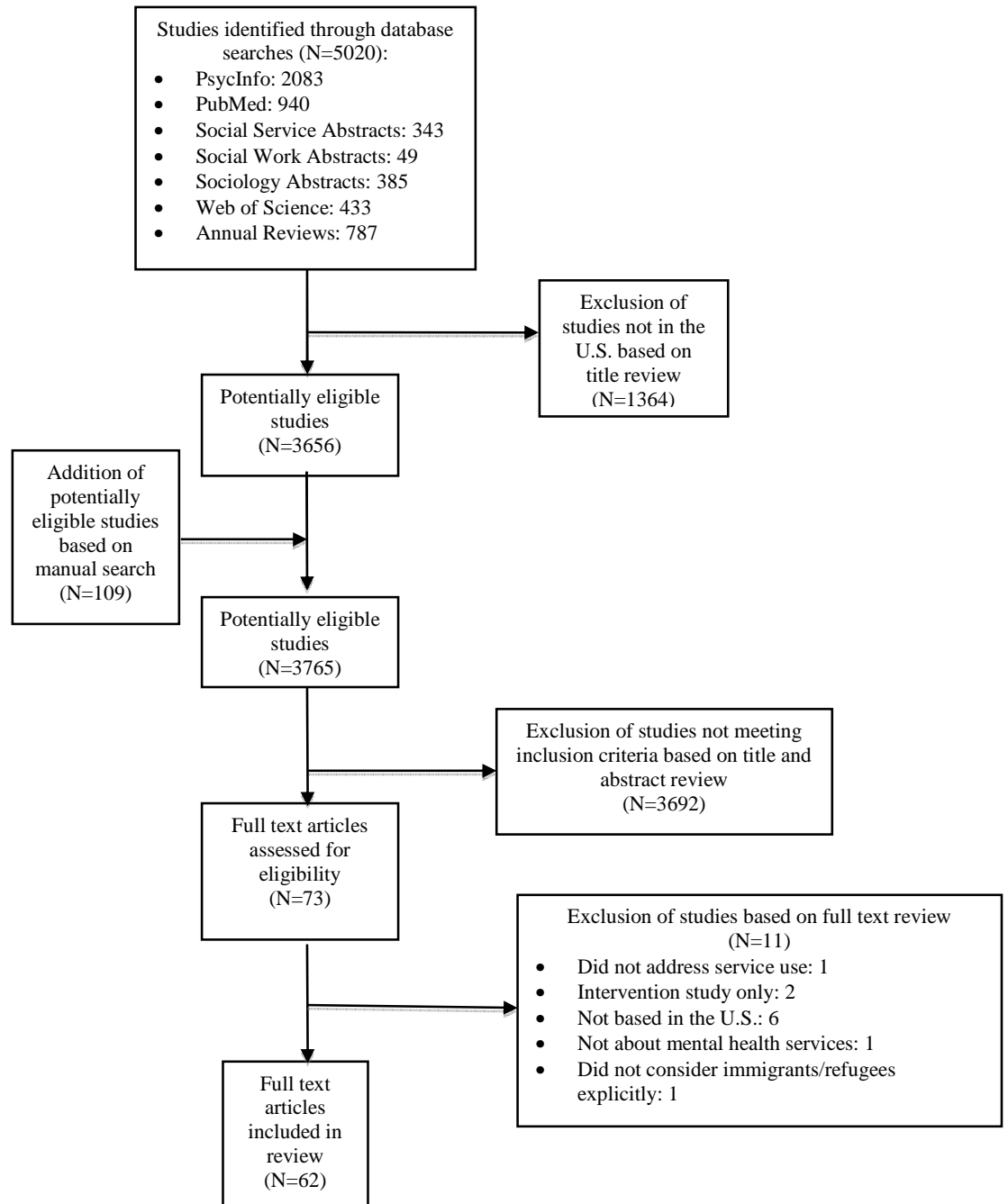


Supplemental Figure 1. Literature Review Process



IMMIGRANT MENTAL HEALTH SERVICE USE

Supplemental Table 1. Service Provider Types

Provider Type	Percentage of Measures Including Provider
Formal Providers	
Mental Health Specialists ^a	33%
Western Medical Services ^b	26%
School Services ^c	1%
Informal Providers	
Religious ^d	12%
Alternative Medical Services ^e	9%
Social Network ^f	9%
Alternative Practices ^g	8%

^a psychologist, general mental health professional, psychiatrist, social worker, counselor, mental health hotline, psychiatric nurse, general outpatient services, clinician at drug/alcohol clinic, therapist, group counseling, individual counseling, in-home counseling, crisis counseling, day treatment

^b general/primary care doctor, nurse, other medical specialist, family practitioner, physical or occupational therapist, emergency room, general inpatient services, internist, cardiologist, gynecologist, medication, physician assistant

^c school counselor, teacher, coach, school nurse, other school personnel

^d religious leader/spiritual advisor, priest, minister, rabbi, monk, sheikh, Santeria, god, Koran, prayer, faith, pastor, staff at faith-based organizations, meditation

^e traditional/natural/folk healer (e.g., Kruu Khmer, Curandero), herbalist, chiropractor, homeopath, doctor of oriental medicine, acupuncturist, naturalist, naturopath

^f family, friends, self-help, online or in person support groups, community members, an elder, chat room

^g spiritualists, fortune teller/psychic, massage, astrologer, megavitamins, yoga, hypnosis, reiki, folk remedy, chelation, qi gong, macrobiotics, polarity, aromatherapy, tai chi, biofeedback, guided imagery, Ayurveda, dietary practices

IMMIGRANT MENTAL HEALTH SERVICE USE

Supplemental Table 2. Descriptive Summary of Reviewed Articles n=62

Characteristic	n	%	Citation
Methodology			
Quantitative	53	86	31-48,50-55,57,59-63,65,66,68,70,72-76,78,80-92
Qualitative	6	10	58,67,69,71,77,79
Mixed-Method	3	5	49,56,64
Cross-sectional	62	100	31-92 (All)
Analysis			
Multivariate	45	73	31-45,48,50-55,57,59,62,63,65,66,68,72-76,78,80-87,89,90
Bivariate and group comparison	12	19	34,46,47,49,56,60,61,64,70,88,91,92
Descriptive qualitative	8	13	49,56,58,67,69,71,77,79
Data Collection Tool			
Quantitative Survey	52	84	31,33-46,48-52,54-57,59-63,65-68,70,72-76,78,80-91
Medical Chart Review	5	8	32,47,53,63,92
Qualitative Interview	5	8	49,58,64,67,69
Focus group	5	8	49,58,71,77,79
Card Sort	1	2	64
Qualitative Survey	1	2	56
Sample size			
Less than 25	3	5	58,69,79
25-99	11	18	55-57,60,64,67,71,75,77,91,92
100-249	13	21	41,46,47,49,53,54,63,76,78,80,83,86,87
250-499	7	11	36,38,50,51,61,62,70
500-999	6	10	43,59,65,66,73,84
1000-2499	13	21	31,37,39,40,44,45,48,72,74,81,82,89,90
2500-9999	5	8	32,34,35,68,88
Over 10,000	4	7	33,42,52,85
Gender			
Women only	5	8	45,64,72,77,83
Men only	1	2	56
Immigration Status			
Immigrants and U.S.-born	32	52	31-37,39-47,52,62,63,66,68,72-74,76,82,85,87-91
Refugees or asylum seekers	8	13	36,49-53,70,71
Undocumented immigrants	2	3	36,47
Age			
Adults 18+	42	68	31,33,34,36,38,40,41,45,47-49,51,52,54-65,67,68,70-75,77,81-83,87-92
Adults excluding elders	15	24	32,33,35,37-39,43,44,50,53,66,78-80,85,86
Elders explicitly included	6	10	4,52,69,73,76,84
Youth included	5	8	46,49,52,62,78
Racial/Ethnic Groups			
Asian or Pacific Islander	49	79	
General Asian	13		31,35,36,38,42,48,53,68,74,82,84,85,89
Chinese	10		31,37,39,59,63,67,80,86,90,92
Korean	7		54,73,77,80,86,90
Vietnamese	5		31,41,65,71,90

IMMIGRANT MENTAL HEALTH SERVICE USE

Cambodian	4		50,51,70,71
Filipino	4		31,44,87,90
Japanese	3		80,86,90
Indian	2		55,90
Laotian	1		90
Latin American	39	61	
General Latino	22		32,33,35,38,40,45– 47,53,56,57,64,68,72,74,76,78,79,81,83–85
Mexican	6		43,58,66,75,81,88
Unspecified Central or South American	3		40,60,88
Puerto Rican	2		81,88
Cuban	2		81,88
Honduran	1		75
El Salvadoran	1		75
Peruvian	1		58
Hispanic	1		62
African and Caribbean	12	19	
General African	7		33,45,53,71,72,85,91
Caribbean	2		34,53
Nigerian	1		61
Ethiopian	1		61
Somali	1		49
European	6	10	
General European	4		33,42,53,85
Russian	1		52
General Eastern European	1		71
Middle Eastern	4	7	
Iranian	2		69,71
Iraqi	1		71
General Middle Eastern	1		53
Research questions			
Factors related to service use	38	61	31–33,35–37,39–41,43–45,48–51,56,57,62,65–68,72,74– 76,78–84,86,88,89,92
Rate of service use	32	52	31–36,39,40,42,43,45–53,58–63,66,68,81,82,88,89,91
Barriers to service use	23	37	38,41,43,45,56,57,60,64,69–75,77,78,80,82,85–87,89
Provider type	13	21	36,43–45,51,54,55,62,64,66,89,90,92
Service provider measures			
Formal providers only	26	42	32,33,35,38,42,46–48,50,61,68,70,73–75,80,82–88,90–92
Informal providers only	1	2	63
Both formal and informal	27	44	31,34,36,37,40,41,43–45,49,51–57,59,60,62,64– 67,76,81,89
Unspecified provider or N/A	8	13	37,58,69,71,72,77–79
Service use measures			
Past year	25	40	31,32,34,35,37,38,42–44,46,48,50,51,60– 62,66,68,74,76,81,84,85,89,90
Lifetime	14	23	36,39–41,47,49,52,53,56,57,74,81,82,88
General mental health service use	10	16	54,55,58,59,65,67,69,77,79,91

IMMIGRANT MENTAL HEALTH SERVICE USE

Attitudes about use	9	15	41,45,56,57,73,75,80,86,87
Barriers to use	8	13	56,57,60,64,70,74,75,77
Stigma and norms	6	10	45,56,57,63,69,72
Treatment adherence/office visits	4	7	33,47,83,92
Provider preference	3	5	41,56,57
Knowledge of resources	1	2	78
Measures of need for services			
Symptom checklist	24	39	33,37,42,44–46,49–51,54–59,64,65,68,73,75,80,83,86
Diagnosis	23	37	31,34– 36,38,39,43,47,48,50,52,53,60,62,63,66,70,74,81,82,84,88,90
Self-reported need	14	23	33,37,38,40,45,48,61,68,72,76,82,84,85,89
N/A or Unknown	9	15	32,41,69,71,77–79,87,91
Suicide attempt	2	3	67,83
Referral from doctor	1	2	92
Immigration related measures			
English fluency	22	36	31,35,36,38,40,42,48,50,51,61,70,73,74,76,80–82,84–86,89,90
Birthplace/country of origin	22	36	31–34,36,42,43,45– 47,53,58,61,62,66,71,72,74,75,85,88,90
Years in the U.S.	20	32	31,34,35,38–41,45,58,62,72,75,80,83–86,88,90,91
Immigration status	20	32	33,45,47,49–51,54–57,59,64,65,67,69,71,77,78,89,92
Generational Status	9	15	31,34,35,39,44,68,87,89,90
Age at immigration	9	15	31,34–36,48,53,82,88,90
Acculturation	8	13	39,56,57,60,63,73,75,80
Language spoken	7	11	32,47,52,68,78,86,88
Acculturative stress	6	10	54,55,59,61,65,81
Year of immigration	3	5	50,70,80
Native language fluency	2	3	40,80
Language barriers	1	2	37
Conceptual frameworks			
Health Care Utilization Model	11		33,35,37,66,73,76,78,82–84,88
Illness Cognition Model	2		57,58
Ecological Model	2		78,79
Network Episode Model	1		37
Cramer's Model	1		86
Theory of Reasoned Action	1		57
Stress-Coping Framework	1		34
Gateway Provider Model	1		49
Family Microsystems Beliefs	1		78
Social Constructivism	1		55
Kleinman's Framework	1		58
Life Course Model	1		48