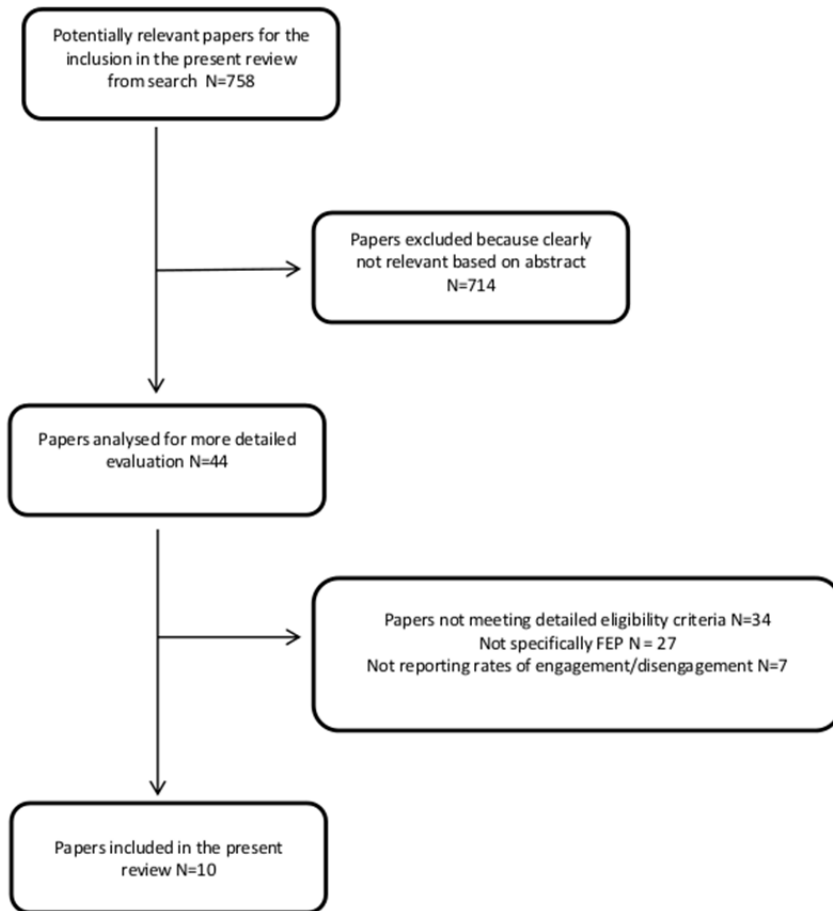


Table 1: PUBMED Search Strategy

<b><u>1.MeSH+Free Text</u></b>	
(1)Psychotic disorders (entry terms for psychotic Disorders include ‘psychosis’, ‘psychoses’, ‘schizoaffective disorder’, ‘brief reactive psychosis’ etc.)	
OR	
(2)Schizophrenia (entry terms=Schizophrenias, Schizophrenic Disorders, Disorder, Schizophrenic, Disorders, Schizophrenic, Schizophrenic Disorder, Dementia Praecox)	
OR	
(3)Schizophrenia and Disorders with Psychotic Features (entry terms=none given/major topic)	
<b><u>Free text</u></b>	
1. Engagement	
2. Disengagement	
3. Engagement predictors (quoted phrase not found)	
4. Drop-out (note: will include studies referring to drop-out rates in clinical trials)	
<b><u>Combined Search</u></b>	<b><u>#Results generated</u></b>
1+2+3+ ‘engagement’	255
1+2+3+ ‘disengagement’	44
1+2+3+ ‘engagement predictors’	0
1+2+3+ ‘drop-out’	93
<b><u>2. Free Text combined search using quoted phrases</u></b>	
<b>(1)</b> ‘First episode psychosis’ AND ‘engagement’	21
<b>(2)</b> ‘First episode psychosis’ AND ‘disengagement’	6
<b>(3)</b> ‘First episode psychosis’ AND ‘nonadherence’	8
<b>TOTAL</b>	<b><u>427</u></b>

Table 2: PSYCHINFO Search Strategy

<b>(1)Psychotic disorders</b>	
<b>OR</b>	
<b>(2)Schizophrenia</b>	
<b>These terms were searched for as ‘Major Topics’</b>	
<b>Free text</b>	
<b>1. Engagement</b>	
<b>2. Disengagement</b>	
<b>3. Engagement predictors</b>	
<b>4. Drop-out</b>	
<b>Combined Search</b>	<b>#Results generated</b>
<b>1 or 2 + ‘engagement’</b>	196 (13 of which=books)
<b>1 or 2 + ‘disengagement’</b>	36
<b>1 or 2 + ‘engagement predictors’</b>	0
<b>1 or 2 + ‘drop-out’</b>	52 (3 of which books)
<b>2. Free Text combined search using quoted phrases</b>	
<b>(1) ‘First episode psychosis’ AND ‘engagement’</b>	30
<b>(2) ‘First episode psychosis’ AND ‘disengagement’</b>	8
<b>(3) ‘First episode psychosis’ AND ‘nonadherence’</b>	9
<b>TOTAL</b>	<b>331</b>



**Fig. 1.** The search strategy for the inclusion of studies in the current review

**Inclusion Criteria:** Studies reporting rates of engagement or disengagement within First Episode Psychosis Services or Early Intervention in Psychosis Services and patients with a specific FEP diagnosis (including first episode schizophrenia).

**Exclusion Criteria:** Studies reporting rates of disengagement from general mental health services, i.e. not specifically FEP populations.