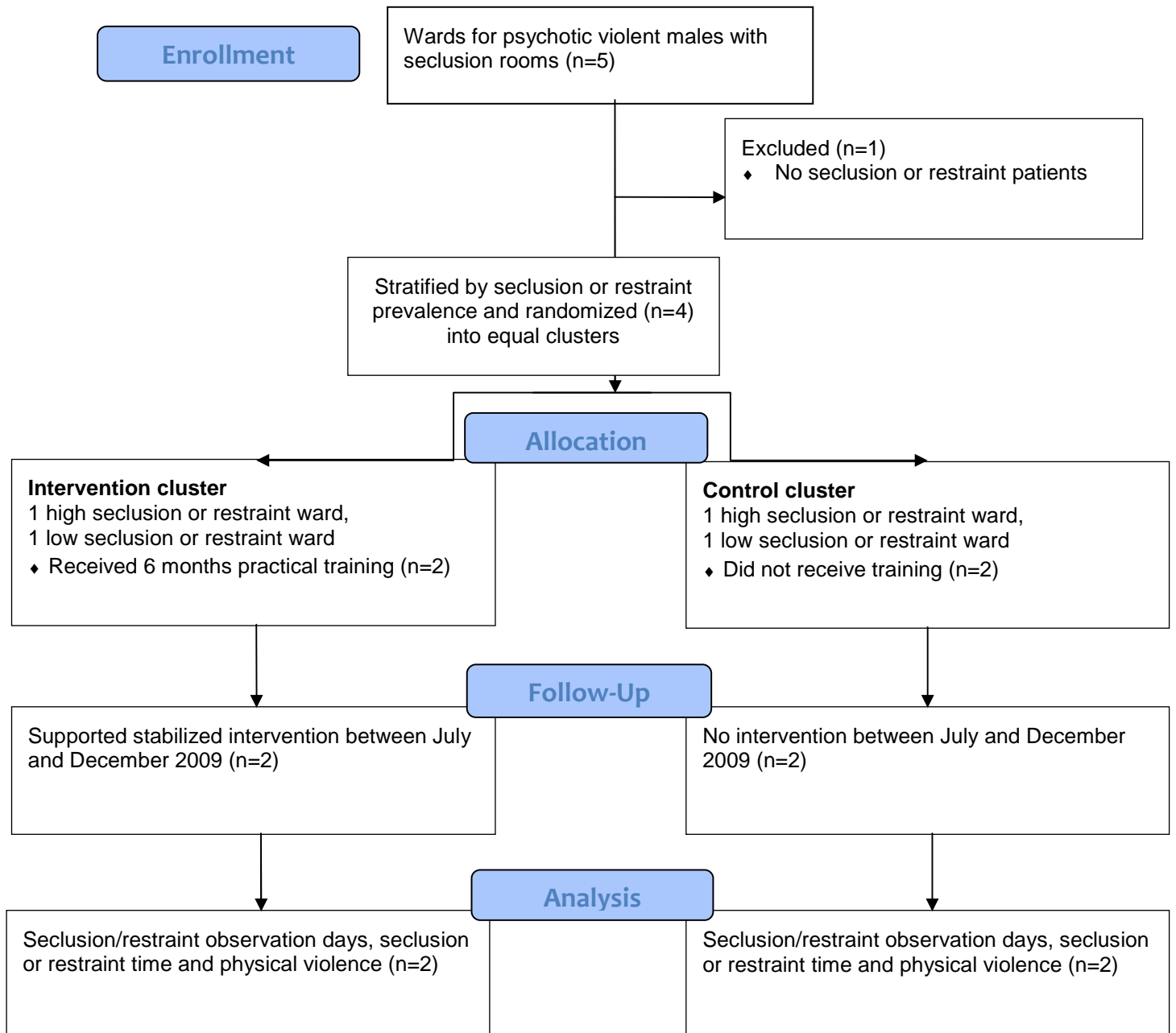


Appendix**Proportion of patients receiving specific antipsychotic medications between 2006 and 2009 in Niuvanniemi Hospital**

	2006	2007	2008	2009
	%	%	%	%
clozapine	68	70	68	70
olanzapine	34	32	30	28
aripiprazole	13	12	9	8
risperidone	11	12	4	7
quetiapine respectively	11	16	15	11
2 or more antipsychotics	7	6	10	6
lamotrigine	25	26	24	25
topiramate	19	17	14	12
valproate	13	14	16	15
lithium	14	16	14	13

CONSORT Flow Diagram: A cluster-randomized controlled study of seclusion and restraint reduction at Niuvanniemi Hospital



Monthly seclusion–restraint–room observation days, seclusion–restraint time, and violent incidents in the intervention group and control group during the stabilized intervention in 2009

Outcome measure	Month	Intervention group			Control group		
		N	total of patient days	per 100 patient days	N	total of patient days	per 100 patient days
Seclusion/restraint/room observation days ¹	Jul	387	1306	29.6	237	960	24.6
	Aug	337	1370	24.5	175	1003	17.4
	Sep	305	1333	22.8	180	923	19.5
	Oct	280	1380	20.2	185	980	18.8
	Nov	233	1317	17.6	179	928	19.2
	Dec	210	1400	15.0	176	924	19.0
Seclusion/restraint time ²	Jul	1440	1306	110	1272	960	133
	Aug	2160	1370	158	792	1003	79
	Sep	1176	1333	88	1872	923	202
	Oct	1248	1380	90	2064	980	210
	Nov	984	1317	74	1704	928	184
	Dec	792	1400	56	1392	924	151
Violent incidents ³	Jul	14	1306	1.1	1	960	.1
	Aug	11	1370	.8	3	1003	.3
	Sep	8	1333	.6	4	923	.4
	Oct	12	1380	.9	3	980	.3
	Nov	13	1317	1.0	2	928	.2
	Dec	6	1400	.4	0	924	.0

¹ Patient days when any seclusion, restraint or room observation was used.

² Patient time (hours) in seclusion or restraint.

³ Physical violent incidents against patients or staff.